

ADAMS

Advanced **D**ata mining **A**nd **M**achine learning **S**ystem

Module: adams-excel



Peter Reutemann

January 8, 2020

©2012-2015



THE UNIVERSITY OF
WAIKATO
Te Whare Wānanga o Waikato



Except where otherwise noted, this work is licensed under
<http://creativecommons.org/licenses/by-sa/4.0/>

Contents

1	Introduction	7
2	Flow	9
3	Tools	11
	Bibliography	13

List of Figures

2.1	Flow for loading multiple sheets of a MS Excel file.	9
2.2	The worksheets loaded from the MS Excel file.	10
3.1	Viewer for spreadsheet files.	11

Chapter 1

Introduction

The *excel* module extends the spreadsheet capabilities of ADAMS by read and write support for Microsoft Excel files. This is possible thanks to the Apache POI library [2] for reading Microsoft Office documents.

Chapter 2

Flow

The additional read and write support is immediately available in the *SpreadSheetReader* and *SpreadSheetWriter* actors. Figures 2.1 and 2.2 display a flow¹ and its associated output that loads multiple sheets from a MS Excel file.

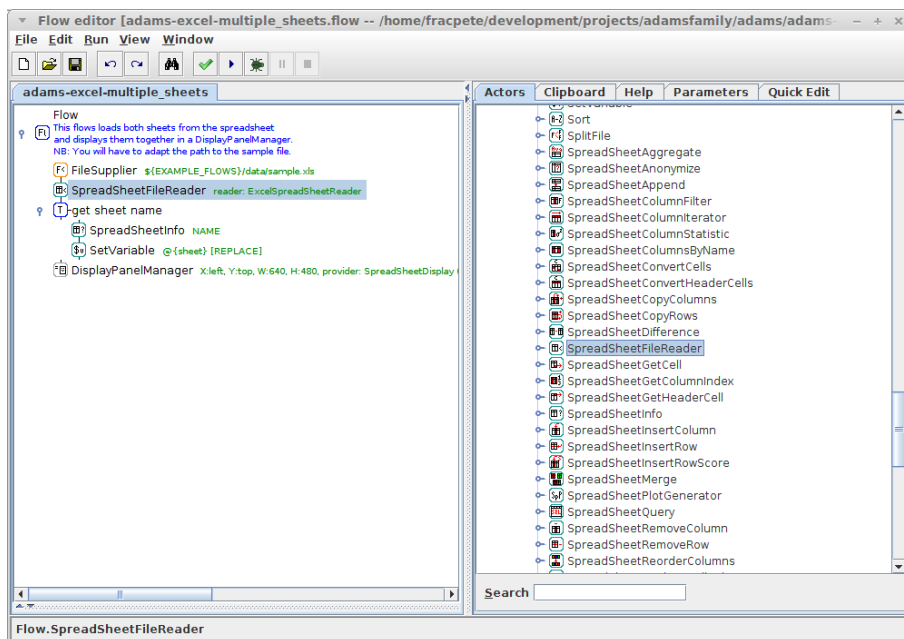


Figure 2.1: Flow for loading multiple sheets of a MS Excel file.

¹adams-excel-multiple_sheets.flow

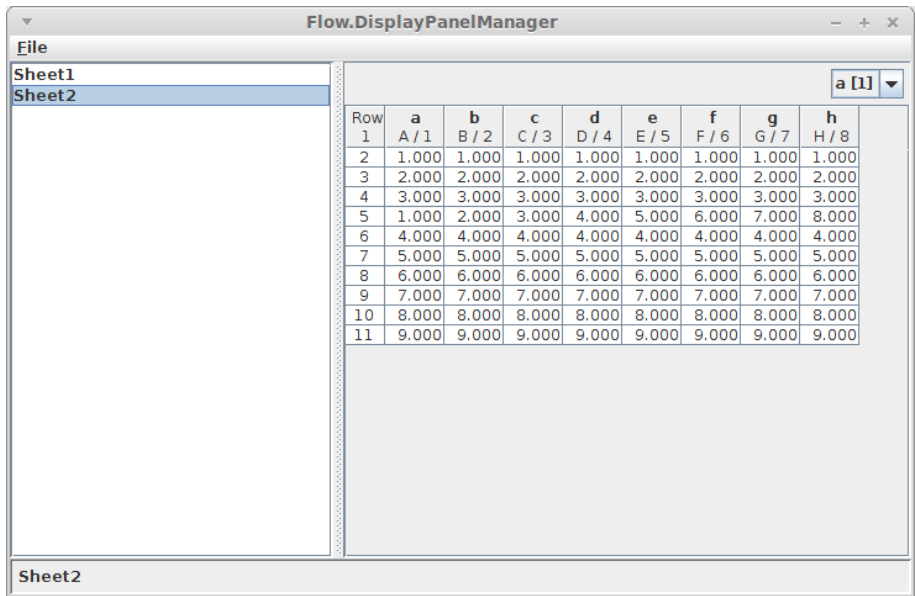


Figure 2.2: The worksheets loaded from the MS Excel file.

Chapter 3

Tools

The *Spreadsheet file viewer* automatically picks up the new file format and allows the user to load MS Excel files. Figure 3.1 shows a screenshot of the viewer with a MS Excel file loaded.

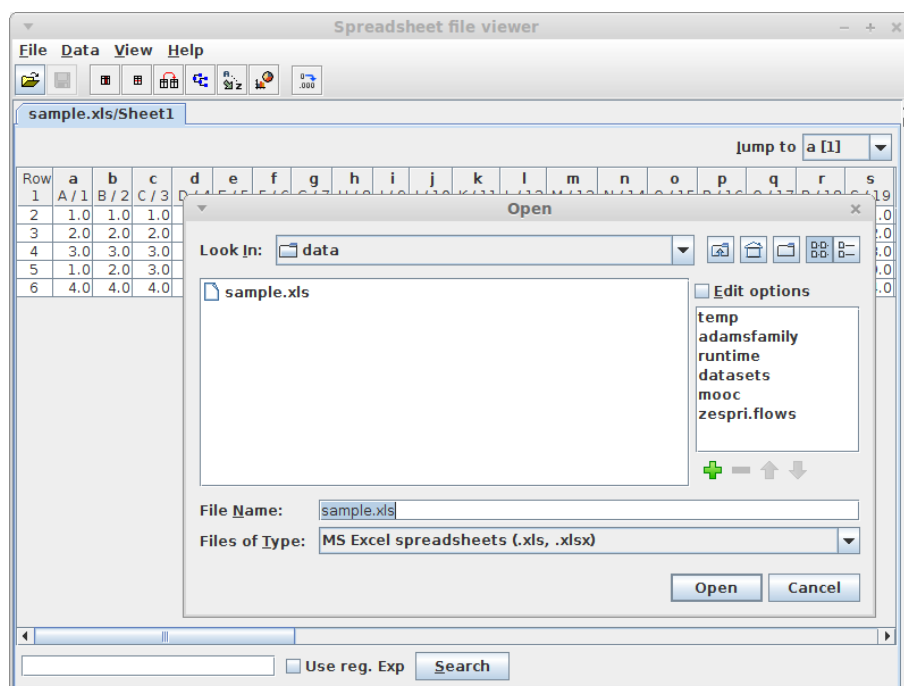


Figure 3.1: Viewer for spreadsheet files.

Bibliography

- [1] *ADAMS* – Advanced Data mining and Machine learning System
<https://adams.cms.waikato.ac.nz/>
- [2] *Apache POI* – the Java API for Microsoft Documents
<http://poi.apache.org/>