

ADAMS

Advanced **D**ata mining **A**nd **M**achine learning **S**ystem

Module: adams-odf



Peter Reutemann

June 22, 2015

©2012-2015



THE UNIVERSITY OF
WAIKATO
Te Whare Wānanga o Waikato



Except where otherwise noted, this work is licensed under
<http://creativecommons.org/licenses/by-sa/3.0/>

Contents

1	Introduction	7
2	Flow	9
3	Tools	11
	Bibliography	13

List of Figures

2.1	Flow for loading multiple sheets of a ODF file.	9
2.2	The worksheets loaded from the ODF file.	10
3.1	Viewer for spreadsheet files.	11

Chapter 1

Introduction

The *odf* module extends the spreadsheet capabilities of ADAMS by read and write support for OpenDocument files [2]. This is possible thanks to the jOpenDocument library [3] for reading ODF files.

Chapter 2

Flow

The additional read and write support is immediately available in the *SpreadSheetReader* and *SpreadSheetWriter* actors. Figures 2.1 and 2.2 display a flow¹ and its associated output that loads multiple sheets from a ODF file.

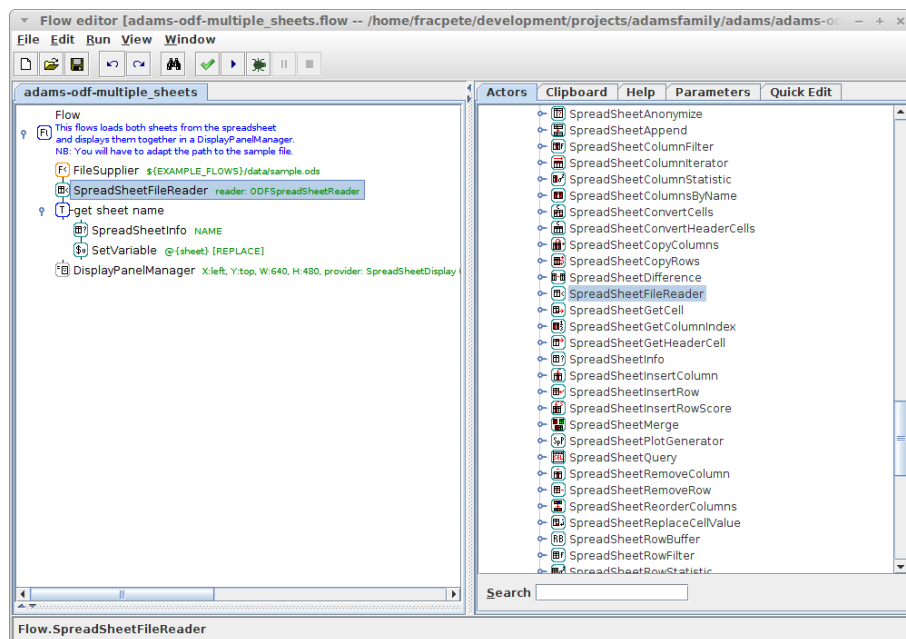


Figure 2.1: Flow for loading multiple sheets of a ODF file.

¹adams-odf-multiple_sheets.flow

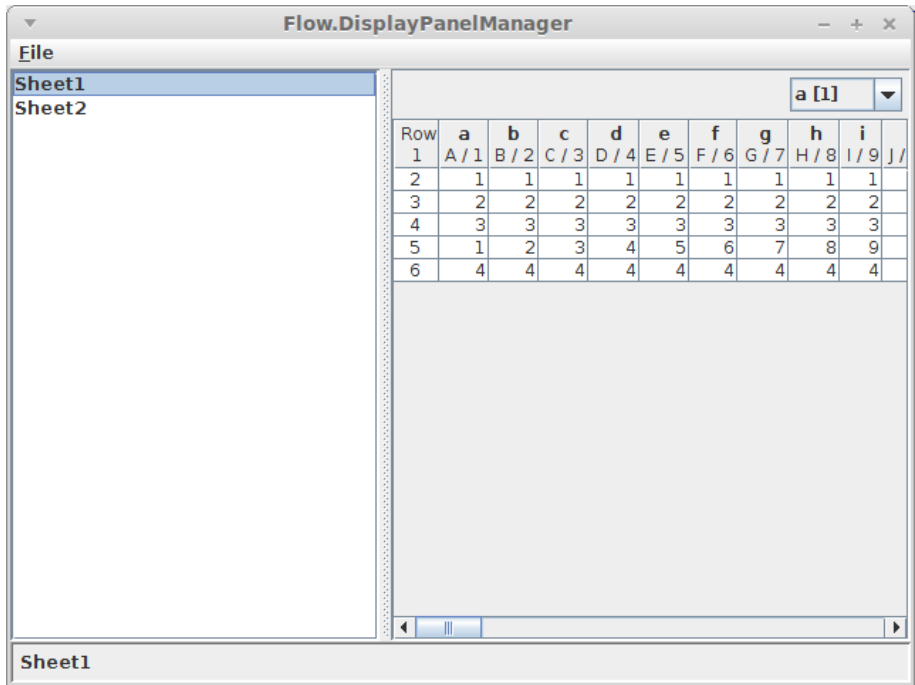


Figure 2.2: The worksheets loaded from the ODF file.

Chapter 3

Tools

The *Spreadsheet file viewer* automatically picks up the new file format and allows the user to load ODF files. Figure 3.1 shows a screenshot of the viewer with an ODF spreadsheet file loaded.

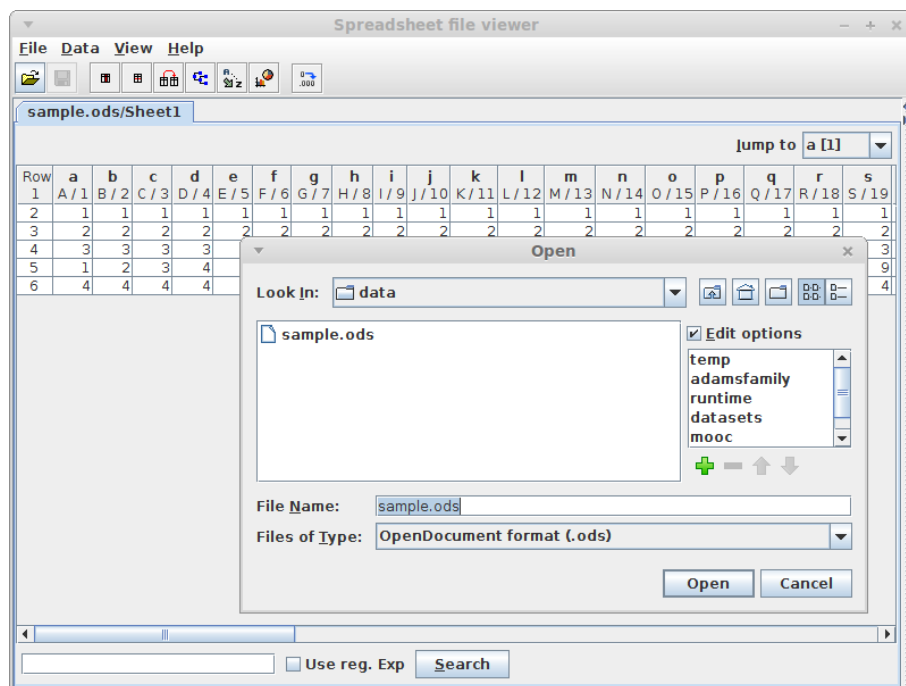


Figure 3.1: Viewer for spreadsheet files.

Bibliography

- [1] *ADAMS* – Advanced Data mining and Machine learning System
<https://adams.cms.waikato.ac.nz/>
- [2] *ODF* – Open Document Format
<http://en.wikipedia.org/wiki/Odf>
- [3] *jOpenDocument* – A pure Java library for OASIS Open Document files
manipulation
<http://www.jopendocument.org/>