

ADAMS

Advanced **D**ata mining **A**nd **M**achine learning **S**ystem

Module: adams-odf



Peter Reutemann

December 2, 2021

©2012-2015



THE UNIVERSITY OF
WAIKATO
Te Whare Wānanga o Waikato



Except where otherwise noted, this work is licensed under
<http://creativecommons.org/licenses/by-sa/4.0/>

Contents

| | | |
|----------|---------------------|-----------|
| 1 | Introduction | 7 |
| 2 | Flow | 9 |
| 3 | Tools | 11 |
| | Bibliography | 13 |

List of Figures

| | | |
|-----|---|----|
| 2.1 | Flow for loading multiple sheets of a ODF file. | 9 |
| 2.2 | The worksheets loaded from the ODF file. | 10 |
| 3.1 | Viewer for spreadsheet files. | 11 |

Chapter 1

Introduction

The *odf* module extends the spreadsheet capabilities of ADAMS by read and write support for OpenDocument files [2]. This is possible thanks to the jOpenDocument library [3] for reading ODF files.

Chapter 2

Flow

The additional read and write support is immediately available in the *SpreadSheetReader* and *SpreadSheetWriter* actors. Figures 2.1 and 2.2 display a flow¹ and its associated output that loads multiple sheets from a ODF file.

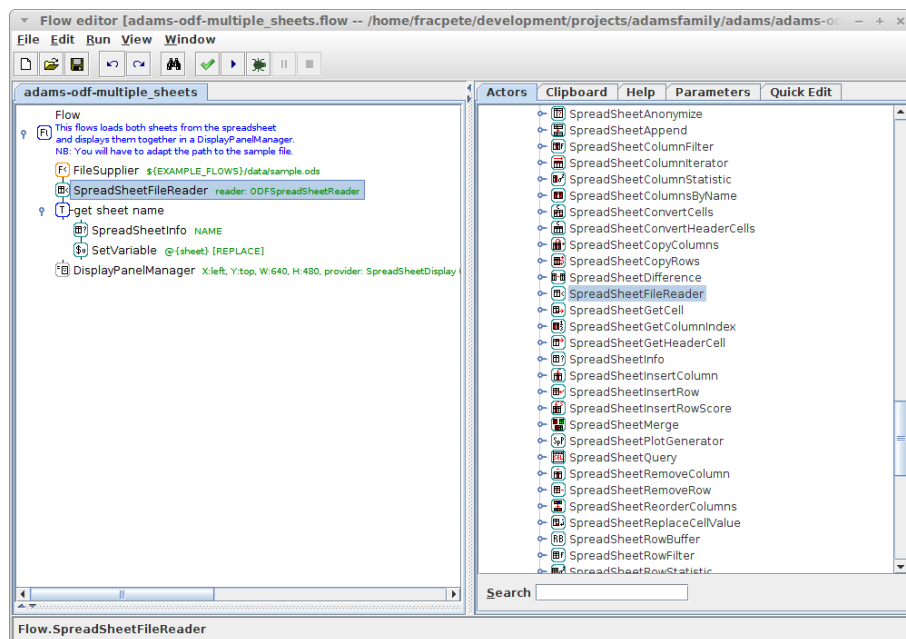


Figure 2.1: Flow for loading multiple sheets of a ODF file.

¹adams-odf-multiple_sheets.flow

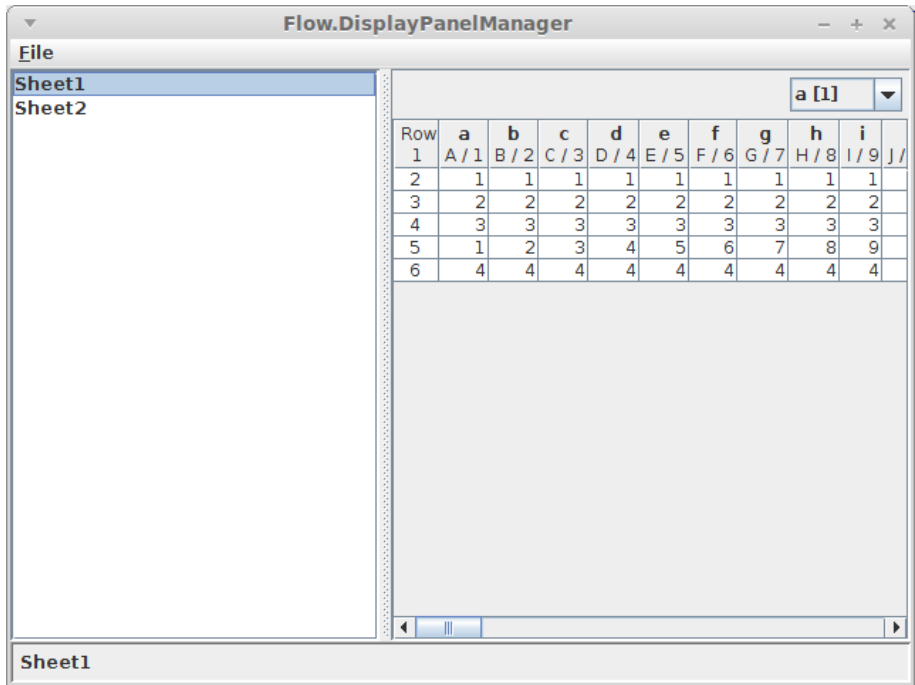


Figure 2.2: The worksheets loaded from the ODF file.

Chapter 3

Tools

The *Spreadsheet file viewer* automatically picks up the new file format and allows the user to load ODF files. Figure 3.1 shows a screenshot of the viewer with an ODF spreadsheet file loaded.

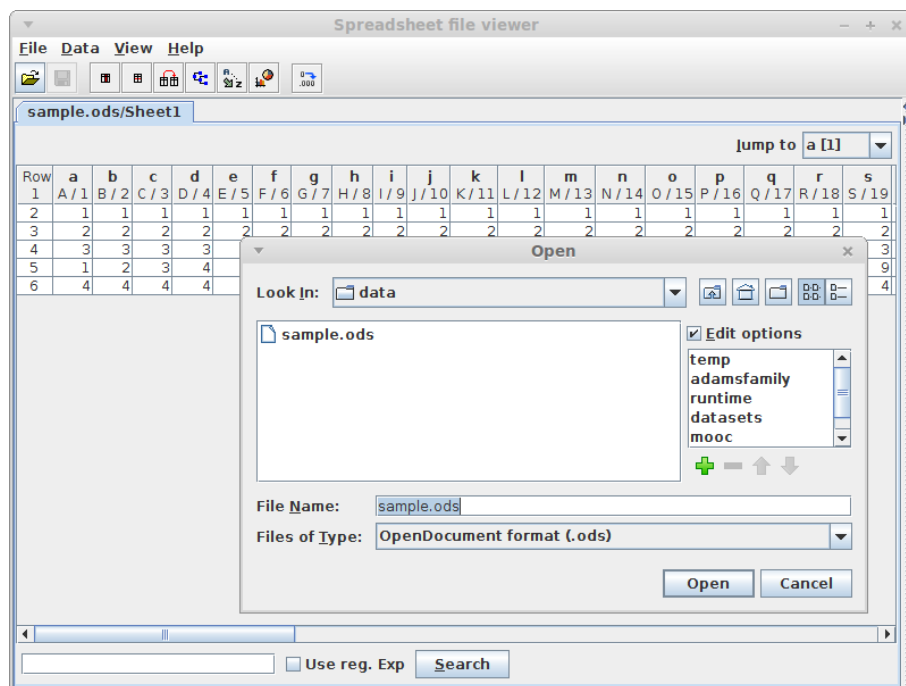


Figure 3.1: Viewer for spreadsheet files.

Bibliography

- [1] *ADAMS* – Advanced Data mining and Machine learning System
<https://adams.cms.waikato.ac.nz/>
- [2] *ODF* – Open Document Format
<http://en.wikipedia.org/wiki/Odf>
- [3] *jOpenDocument* – A pure Java library for OASIS Open Document files manipulation
<http://www.jopendocument.org/>